

ESA CONTRACT NO. 4000131356/20/NL/AF WITH TERRARIA SRL

SPACE IN RESPONSE TO COVID-19 OUTBREAK

EPIC19

EPIDEMIOLOGICAL AND LOGISTIC COVID-19 MODEL

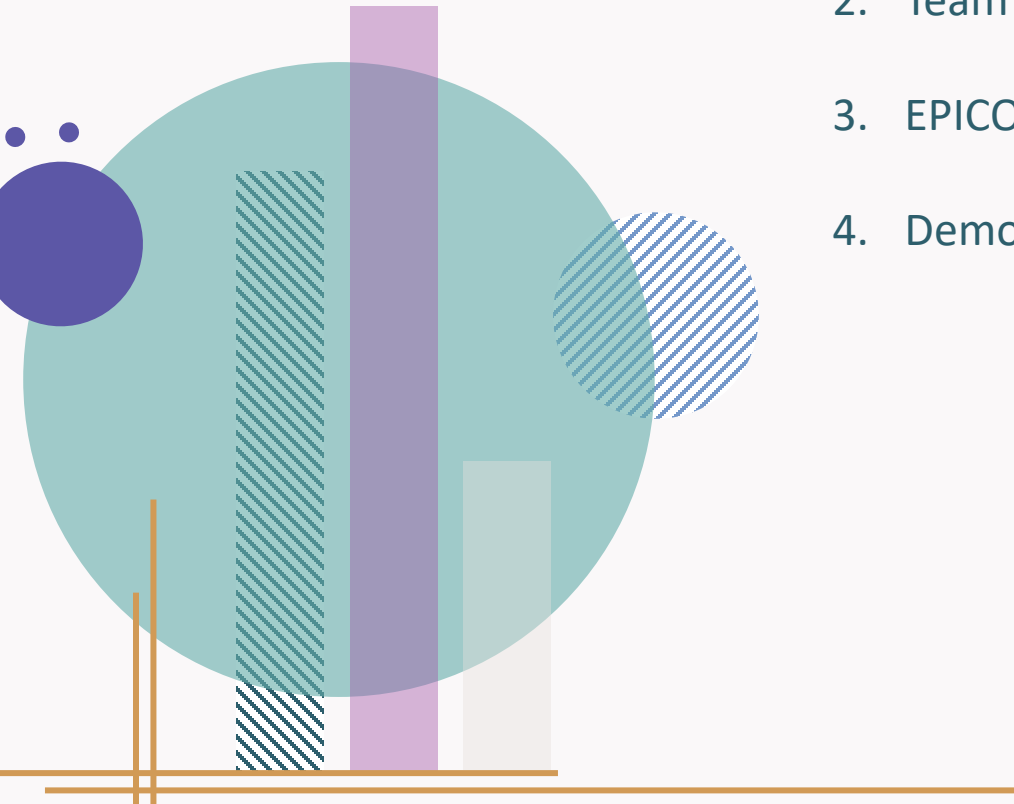
www.epico19.eu

Giuseppe Maffei, Roberta Gianfreda, Alessia Goffi
g.maffei@terraria.com

TerrAria srl, Via M. Gioia 132, 20125 Milano (Italy), phone +39 02 87085650

OUTLINE

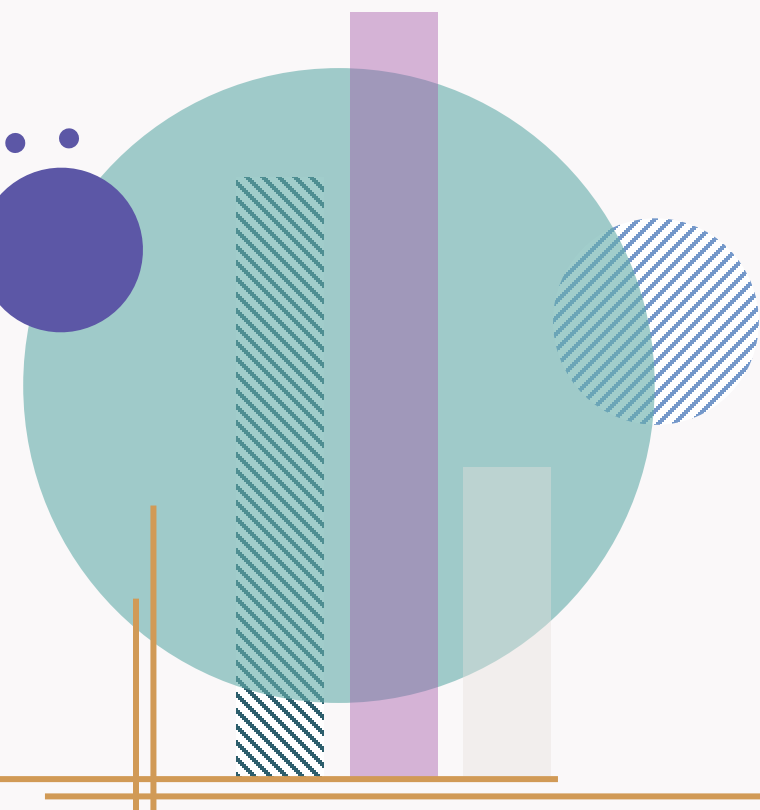
1. EPICO19's introduction
2. Team presentation
3. EPICO19's engines
4. Demo of the developed solution



EPICO19

EPICO19 (Epidemiological and logistic COVID-19 model) platform aims to:

- ❖ **support** local health agency technicians and decision makers in the management of pandemic events with a **DSS** (Decision Support System)
- ❖ **simplify** access, display and comprehensibility of pandemic data in a simple and intuitive interface
- ❖ **make predictions** at the local level on the trend of key indicators with a methodology validated in Reggio Emilia province
- ❖ **share through an automated report** part of the information, graphs and maps on the pandemic trend externally



EPICO19'S TEAM

EPICO19 was developed by the **innovative SME TerrAria srl**, specialized in the creation of ICT platforms and solutions for public and private entities, with the collaboration and technical-scientific support of:

- ❖ **Studiomapp srl**, deeptech **startup** specialised in AI and geospatial intelligence
- ❖ **UNIMORE - CREAGEN**, Research Center in Environmental, Genetic and Nutritional Epidemiology of the University of Modena and Reggio Emilia

Reggio Emilia Local Health Authority (AUSL), provincial institution which deals with the management of health policies and epidemics at the level, is EPICO19 **end user**



END USER

EPICO19 has been tested by AUSL Reggio Emilia during the pilot phase of the project, from April 2021 to December 2021.



“(...) EPICO19 responds to the needs of those involved in pandemic management”

“(...) EPICO19 provides accurate forecast of short term hospitalizations”

BACK END



FRONT END

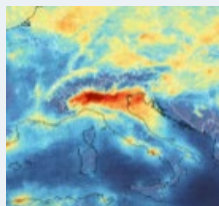
INPUT DATA

SATELLITE IMAGES
(NO₂/MOBILITY)

HEALTH DATA
(COVID19 CASES...)

SATEO

VHR



STUDIOMAPP
maps and apps for quality of life

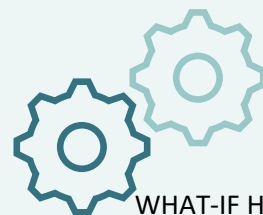
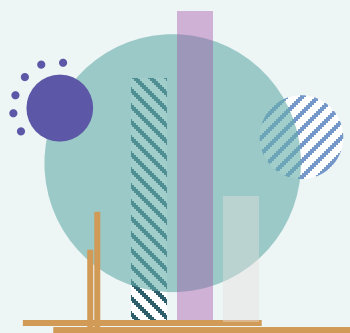
Classe di età	Vivere conosci			Prevalenza del COVID-19			Rapporti di compressione		
	Uomini	Donne	Totale	Uomini	Donne	Totale	Uomini	Donne	Totale
Meno di 5	23.000	22.200	45.200	104,4%	4,80%	4,24%	4,40%	4,40%	4,40%
5-9	24.000	23.000	47.000	104,3%	4,80%	4,44%	4,44%	4,44%	4,44%
10-14	25.000	24.000	49.000	106,3%	5,20%	4,68%	4,68%	4,68%	4,68%
15-19	26.000	25.000	51.000	106,0%	5,50%	4,88%	4,88%	4,88%	4,88%
20-24	27.000	26.000	53.000	105,3%	5,80%	5,27%	5,27%	5,27%	5,27%
25-29	27.000	27.000	54.000	100,0%	7,70%	7,24%	7,24%	7,24%	7,24%
30-34	40.000	40.000	80.000	100,0%	8,30%	7,72%	7,72%	7,72%	7,72%
35-39	40.000	40.000	80.000	100,0%	8,30%	7,72%	7,72%	7,72%	7,72%
40-44	30.000	30.000	60.000	100,0%	7,30%	6,74%	6,74%	6,74%	6,74%
45-49	30.000	30.000	60.000	98,0%	6,70%	6,16%	6,16%	6,16%	6,16%
50-54	30.000	30.000	60.000	97,1%	6,00%	5,54%	5,54%	5,54%	5,54%
55-59	28.000	30.000	58.000	90,0%	5,30%	4,84%	4,84%	4,84%	4,84%
60-64	28.000	30.000	58.000	80,0%	4,60%	4,14%	4,14%	4,14%	4,14%
65-69	25.000	28.000	53.000	80,0%	3,90%	3,44%	3,44%	3,44%	3,44%
70-74	20.000	28.000	48.000	70,0%	3,20%	2,74%	2,74%	2,74%	2,74%
75-79	18.000	24.000	42.000	60,0%	2,50%	2,04%	2,04%	2,04%	2,04%
80-84	8.000	14.000	22.000	37,1%	1,80%	1,34%	1,34%	1,34%	1,34%
85-89	4.000	11.000	15.000	40,0%	0,90%	0,44%	0,44%	0,44%	0,44%
90-94	1.000	4.000	5.000	20,0%	0,20%	0,10%	0,10%	0,10%	0,10%
95+	200	1.200	1.400	20,0%	0,05%	0,02%	0,02%	0,02%	0,02%
Totale	485.000	518.000	1.003.000	93,0%	100,00%	100,00%	100,00%	100,00%	100,00%



SERVIZIO SANITARIO REGIONALE
EMILIA-ROMAGNA
Azienda Unità Sanitaria Locale di Reggio Emilia
IRCCS Istituto in tecnologie avanzate e modelli assistenziali in oncologia

EPIC19 ENGINES

AI EPIDEMIOLOGICAL MODEL



WHAT-IF HEALTH POLICIES
SCENARIOS



UNIMORE
UNIVERSITÀ DEGLI STUDI DI
MODENA E REGGIO EMILIA

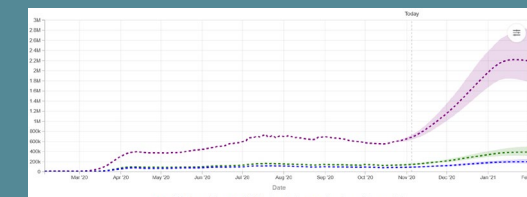
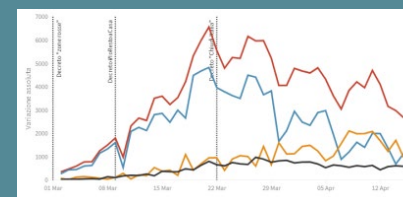
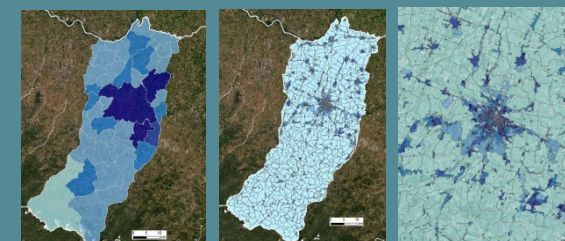


PUBLIC HEALTH
EXPERTS

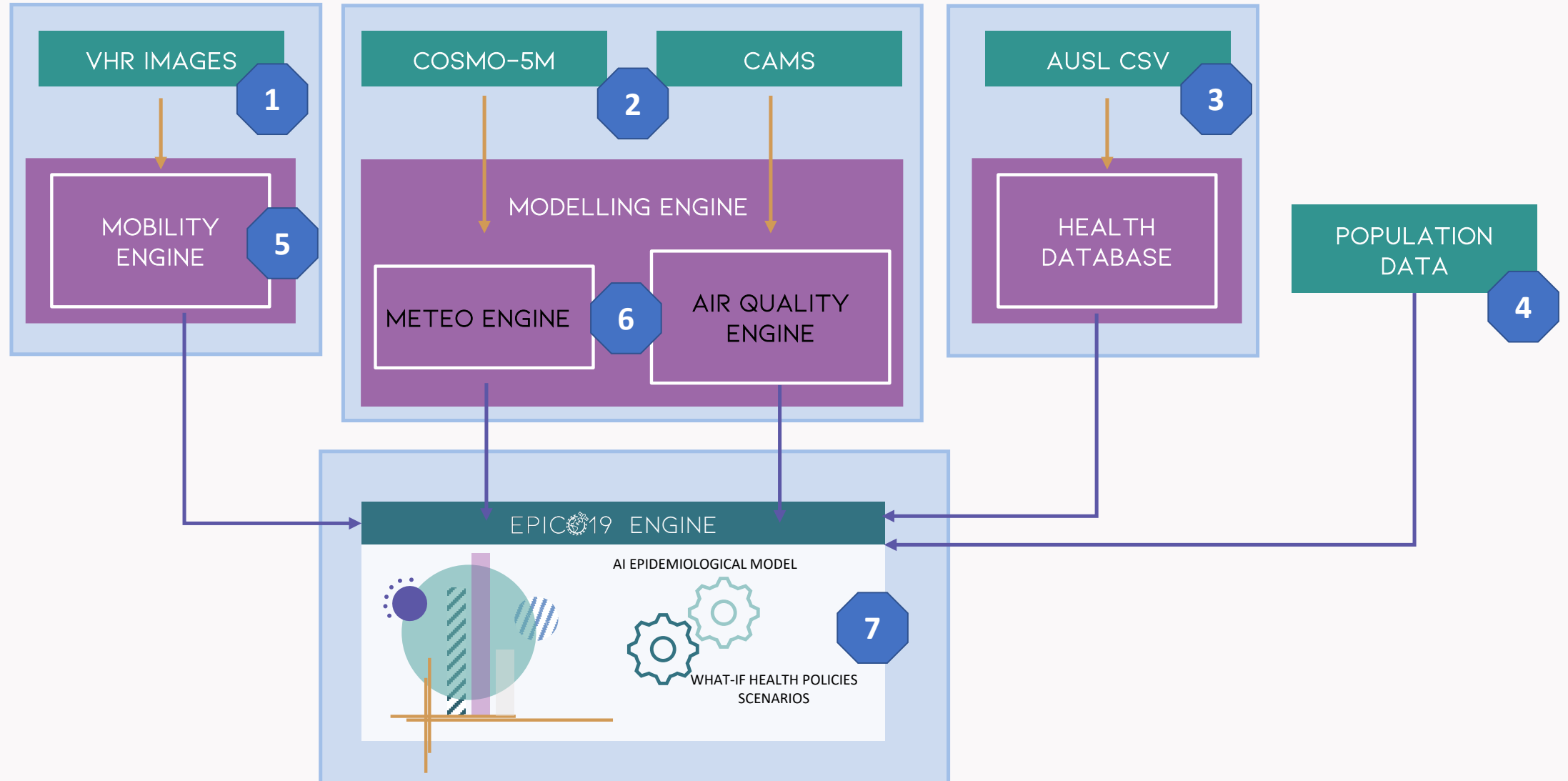


MONITORING
PAST, CURRENT AND FORECASTED
OUTBREAK DIFFUSION MAPS

WHAT-IF HEALTH POLICIES SCENARIOS
(PAST, CURRENT AND FORECASTED)

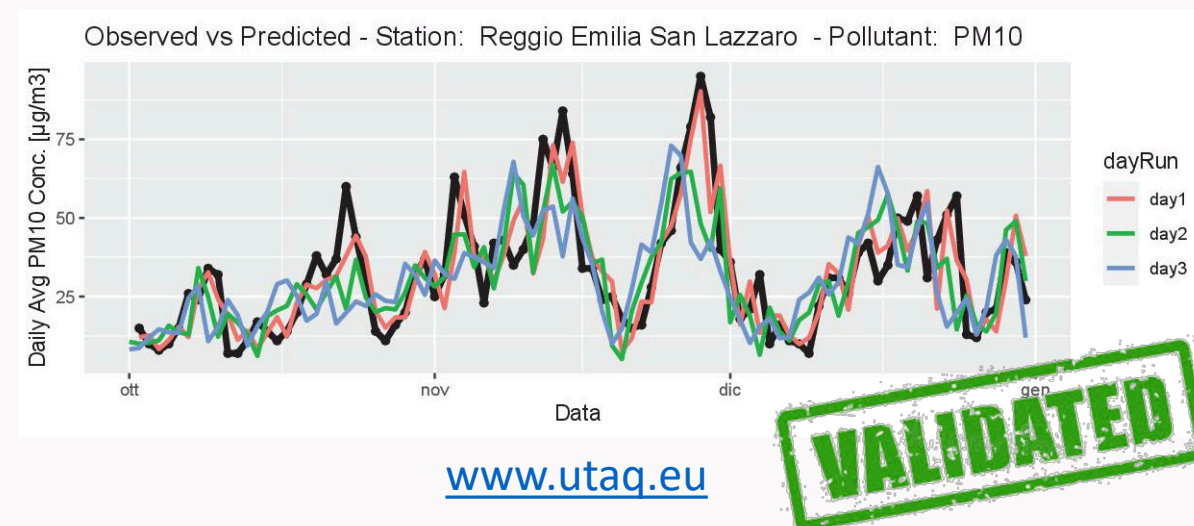
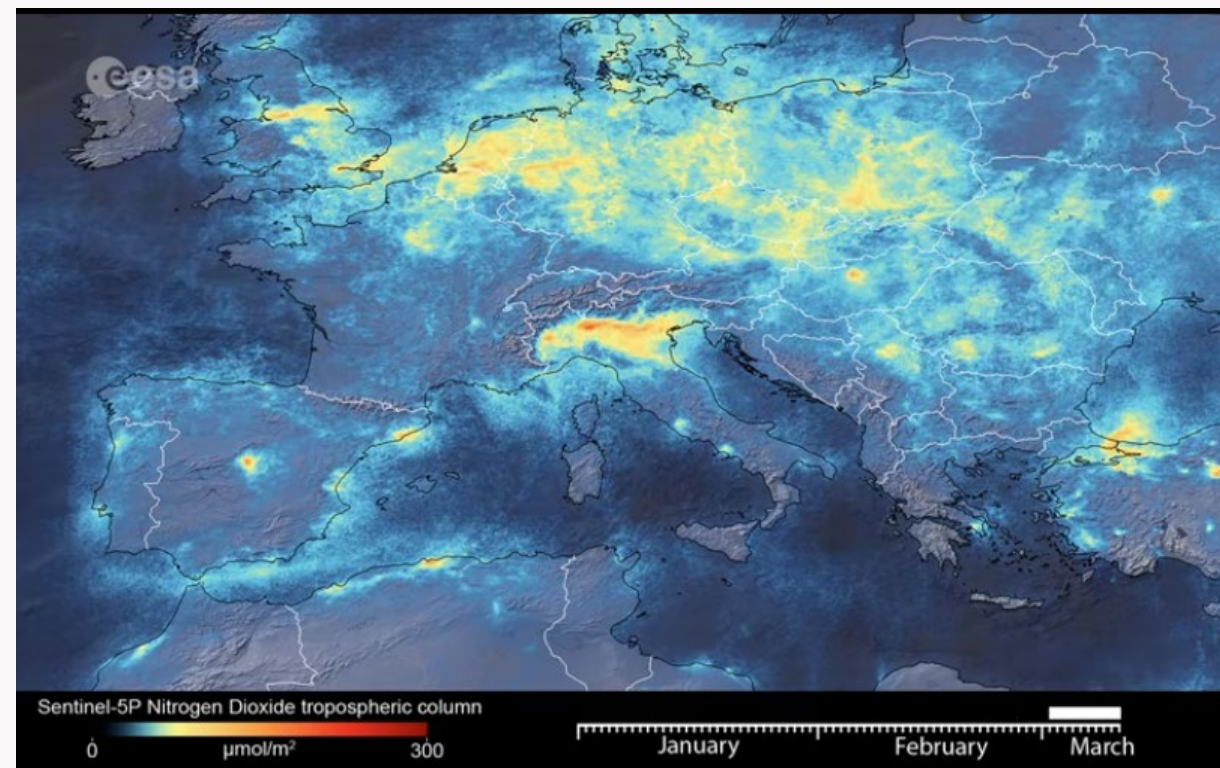


ENGINE COMPONENTS OF EPICO19



AIR QUALITY ENGINE

- ❖ It consists of two sub-processes: meteorological and air quality model.
- ❖ Meteorological model is **COSMO-5M**.
- ❖ Air quality model uses **CAMS model - analysis service**, downscaled at local scale with the integration of air quality measurements and local traffic emission thanks to the methodology of **Urban Tool for Air Quality (UTAQ)** developed by TerrAria.



MOBILITY ENGINE

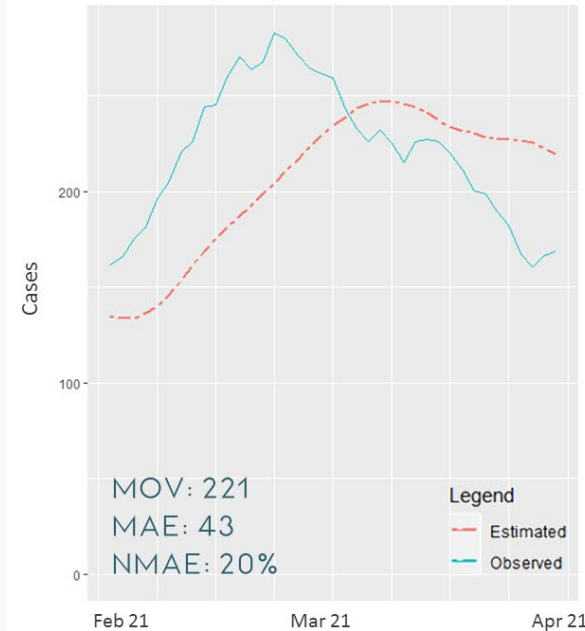
- ❖ Studiomapp delivered a daily crowding index as a **mobility indicator** using a **multisource and multisensor approach**, combining traffic open data, Copernicus services and VHR satellite/aerial imagery.
- ❖ VHR satellite and aerial imagery were analysed using Studiomapp's proprietary algorithm that automatically detected and localised up to 22 different types of vehicles. This enabled us to count the number of cars, buses and trucks and estimate the presence of people in hospitals, parking lots, supermarkets, working places, train stations and logistic hubs.



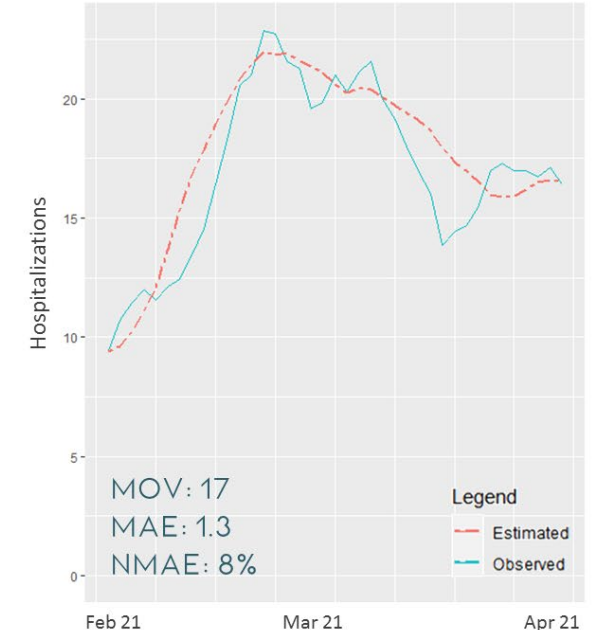
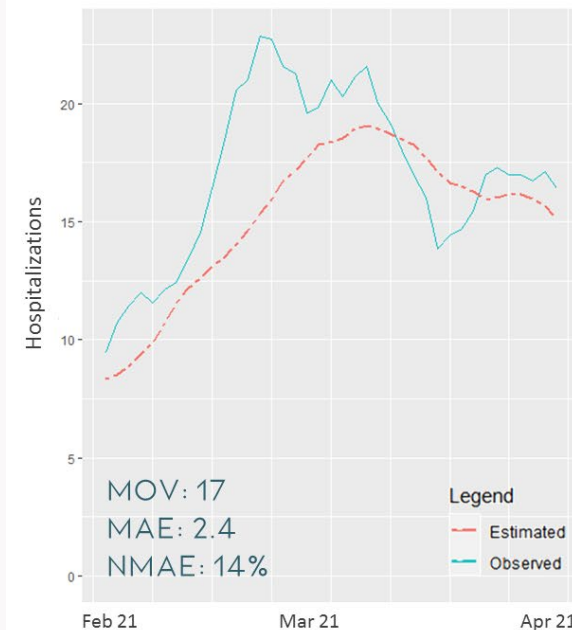
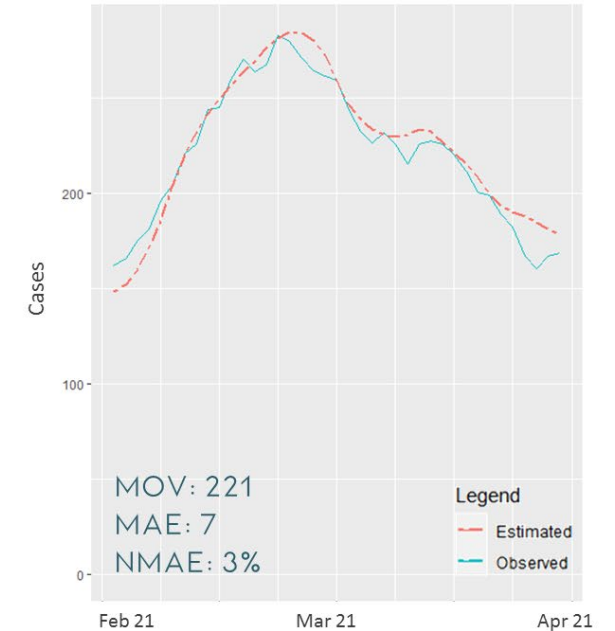
EPIDEMIOLOGICAL ENGINE

- ❖ It exploits **Machine Learning models** as Convolutional Long Short-Term Memory (ConvLSTM), which can deal spatial and temporal components, to **predict cases and hospitalizations related to COVID-19**.
- ❖ It is possible to carry out simulations for a maximum of **7 days of forecast both** in the future and in the past.
- ❖ Cases model is fed with auto-regressive component, crowding index, average daily solar radiation, PM2.5 average concentrations. Hospitalization model is fed with cases, crowding index, average daily wind speed.

ONLY WITH HEALTH
VARIABLES

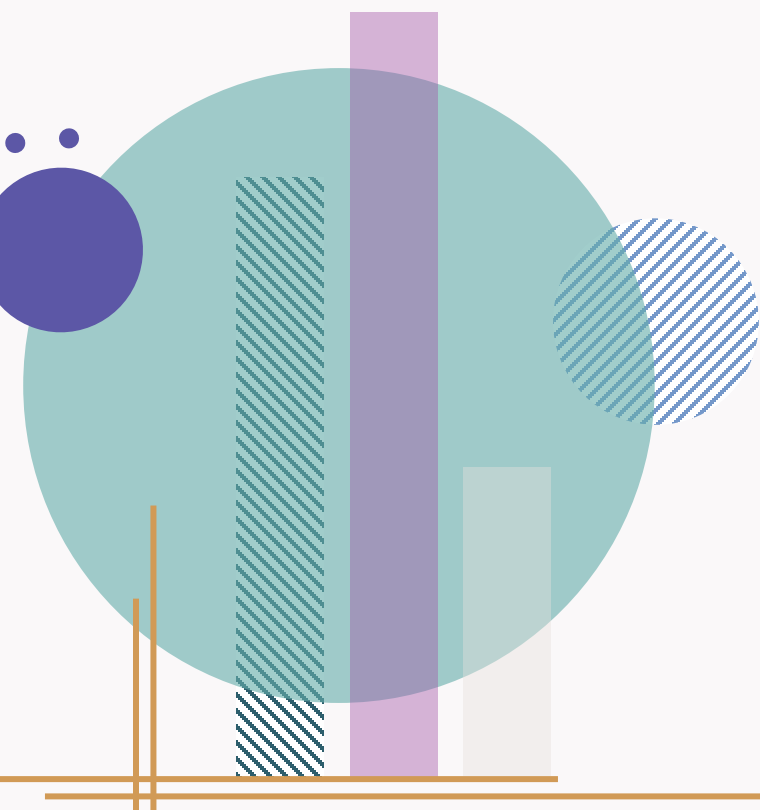


ALSO WITH ENVIRONMENTAL
VARIABLES



EPICO19: ADDED VALUES

- ❖ Added values compared to the other solutions:
 - **AI self-learning predictions**
 - **Local scale analysis** (census section)
 - **Automated report** with graphs, maps and reports
 - Communication with citizens (optional)
- ❖ The features developed fully respond to the **needs** of the first user (AUSL Reggio Emilia) and are **easily adaptable** to other realities in the Italian territory
- ❖ Science based: the different models used are at the end of the scientific **validation process**, thanks to the experiences and contributions of internationally recognized organizations





L'epidemiologia del COVID-19, i dati satellitari e l'Intelligenza Artificiale per la lotta alle pandemie

Giovedì 2 dicembre 2021, ore 14.00-18.00
Aula Magna Pietro Manodori, Viale Allegri 9, Reggio Emilia

L'evento sarà trasmesso in diretta su tv.unimore.it

È necessaria la registrazione per la sola partecipazione in presenza:
massimo 100 partecipanti per capienza aula, green pass obbligatorio

Al termine dell'evento seguirà aperitivo a buffet

Il programma completo e il modulo di registrazione sono disponibili su:
www.creagen.unimore.it



DISSEMINATION

Oral presentation at the SISMEC National Congress <https://sismecbari2021.it/>, Bari, Italy) on 16 September 2021

Oral presentation at SItI National Congress <http://www.sitinazionale.org/> in Lecce (Italy) on 6 November 2021

Conference focused on “The epidemiology of COVID-19, satellite data and Artificial Intelligence for the fight against pandemics” on 2 December 2021 in Reggio Emilia (Italy) <https://www.creagen.unimore.it/lepidemiologia-del-covid-19-i-dati-satellitari-e-lintelligenza-artificiale-per-la-lotta-alle-pandemie/>

Abstract published on the "Book of Abstract" of World Space Forum 2021
<https://www.unoosa.org/oosa/en/ourwork/world-space-forum/2021/world-space-forum-2021.html>

TOOL DEMO



Space in response to COVID-19 outbreak

EPIC¹⁹

EPIDEMIOLOGICAL AND LOGISTIC
COVID-19 MODEL

Benvenuti
nel portale di servizi EPIC019
(EPIdemiological and logistic
COvid-19 model)

Utente

Password

 Accedi Password dimenticata?

<http://epico19.terraria.com/html/public/login.jsf>

THANKS FOR YOUR ATTENTION

www.epico19.eu

Giuseppe Maffeis

g.maffeis@terraria.com

www.terraria.com

TerrAria srl - Milan (Italy)

+39 02 87085650